

HR Report: April 3, 2012

New Hire

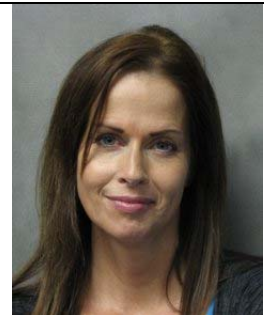
Amanda Lanphear – Case Manager, JET (Kalamazoo County)

LMC welcomed Amanda on March 19, 2012. As a case manager, Amanda is responsible for assisting participants with employment skills training and coordination of services with other Michigan Works! partners and agencies in an effort to increase employability skills and reduce barriers to employment. Amanda was formerly a WIA case manager with the Michigan Works! Kalamazoo offices and holds a bachelor of arts degree from Western Michigan University.



Transfer

Brenda Carlson – transferred to Case Aid, JET (Kalamazoo County) March 26, 2012.



Retirement

Henri Hall – After 20 years of service to LMC and the community, Henri Hall, Early College Coordinator/Admissions Specialist, retired on March 31, 2012. We wish Henri a long retirement filled with adventure and fun!

